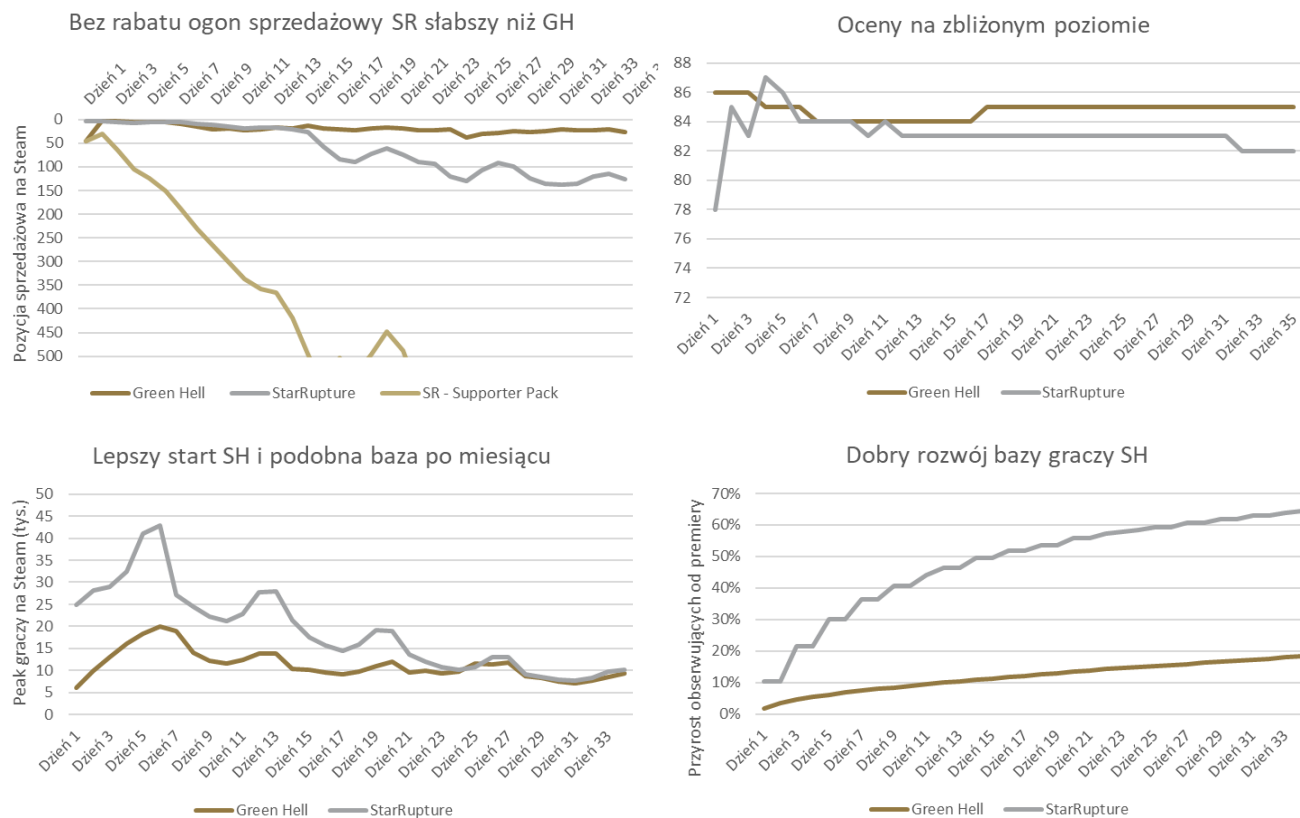


CREEPY JAR (HOLD, 802 PLN) – a month after the release of StarRupture

Here's a summary of the basic stats for the first few weeks since StarRupture debuted at EA.



Source: Steam

- In the first less than two weeks of its release, SR sold 500,000 copies, which allowed to achieve \$8.7 million in gross revenue. The wishlist on Steam as of January 17 had 935 thousand players. **We believe that by February 9 inclusive, StarRupture together with the Supporter Pack could have generated a total of approx. PLN 53 million in net revenue.** However, a lot depends on how much of each copy stays in the studio – which remains unknown – although the geographical structure of sales should be conducive to better readings than in the case of Green Hell.
- Currently, 53% of SR reviews are in English, 11.5% in German, 6.4% in Chinese, and 2.8% in Russian. **Therefore, we are talking about a clearly more commercially advantageous sales distribution.** Green Hell has so far recorded 35% of reviews in English, 18.5% in Chinese, 6.2% in Russian and 4.7% in German.
- In terms of sales, it is clear how important the game was with a 20% promotion for the debut period. During the discount, SR maintained the trajectory of its position in the Steam sales ranking at a similar level to GH coop. Then there was a clear decline in interest, but we are still talking about relatively high levels. **In addition, a regular improvement in the sales position should be noticed during weekends, which are characterized by slightly higher player activity.** It is also worth remembering that since GH, Steam's total revenue has been on an upward trend, which means that a given position should allow it to generate higher and higher amounts in nominal terms.
- We can most likely expect another recovery in sales in February, when the first free content update will be released (1Q26 was announced, while the latest communication suggests a close date).
- It's also worth remembering that SR is currently at an earlier stage of development than GH when co-op mode was added. GH was already at full release at that time, so players already had a storyline available.
- As far as ratings are concerned, we do not see any threat here. The percentage of positives remains stable above 80%, and the studio regularly addresses the comments of players. The current levels are as good as possible to maintain long selling.
- Comparing the number of players at the peak moments of both games best illustrates the scale of the studio's progress. SR reached a significantly wider audience. **The flattening of the player distribution may be a bit disappointing** (lower sales tail than could have been thought right after the release), while the number remaining at a level close to GH after a month confirms that the title should also become a longseller, and the starting point in the form of GH is still satisfactory.
- High hopes can also be associated with the rate of increase in the number of followers, which clearly exceeds GH. However, we associate this mainly with differences in the stage of development (SR has just appeared on the market, GH has been present for 2 years).

- After 35 days, SR received 3.8 thousand reviews (of which 1.9 thousand during the 1st week) and GH received 4.2 and 1.7 thousand respectively.

In conclusion, we still rate StarRutpure's debut as very good. We believe that the studio has successfully added a second IP to the portfolio, which will enjoy unflagging interest from gamers in the long term. Among the positive aspects, we should single out the continued more favorable geographical structure of sales compared to GH, while among the disappointments with the state immediately after the release, we point to the equalization of the peaks of players despite the initial large advantage over GH. This prompts us to rethink the distribution of our sales forecast towards bringing volumes closer to the numbers corresponding to GH sales. We treat the erosion of the position in the Steam sales ranking after the 20% promotion has been abandoned as an expected phenomenon.

Mateusz Chrzanowski, DI
Equity Analyst in the Analysis and Advisory Department
mateusz.chrzanowski@noblesecurities.pl
tel. 785 904 686

LEGAL DISCLAIMER

FUNDAMENTAL RULES FOR ISSUING ANALYTICAL REPORT

This analytical report, hereinafter referred to as the "Report", was prepared by Noble Securities S.A. ("NS") based in Warsaw.

The basis for the preparation of the Report were publicly available information known to the Analyst as at the date of preparing the Report, in particular information provided by the Issuer in current and periodic reports prepared as part of its disclosure obligations.

The Report only expresses the analyst's knowledge and views as at the date of its preparation.

The forecasts and evaluation elements presented in the Report are based solely on the analysis performed by the Analyst, without arrangements with the Issuer or with other entities, and are based on a number of assumptions that may turn out to be irrelevant in the future.

NS or the Analyst do not give any assurance that the forecasts will work.

The report issued by NS is valid for a period of 24 months, unless it is previously updated. The frequency of updates results from the date of publication by the Issuer of financial results for a given reporting period, the market situation or subjective assessment of the Analyst.

STRONG AND WEAKNESSES OF VALUATION METHODS APPLIED BY NS IN THE REPORT

The DCF (eng. *discounted cash flow*) method - is considered the methodologically most appropriate valuation technique and consists in discounting financial flows generated by the rated entity. Strengths of this method include taking into account all cash flows that flow in and out of the company and the cost of money over time. The disadvantages of the DCF valuation method are: a large number of assumptions and parameters that need to be estimated and the sensitivity of valuation to changes in these factors. A variation of this method is the discounted dividend method.

Peers valuation - is based on a comparison of valuation multipliers of companies in the industry in which the rated entity operates. This method very well reflects the current state of the market, requires fewer assumptions and is simpler to apply (relatively high availability of indicators for compared entities). Its disadvantages include high volatility related to price fluctuations and stock exchange indices (in the case of comparison to listed companies), subjectivism in the selection of a group of comparable companies and simplification of the company image leading to the omission of some important parameters (eg growth rate, corporate governance, non-operational assets, differences in accounting standards).

INTERESTS OR CONFLICTS OF INTERESTS THAT MAY AFFECT THE REPORTING OBJECTIVITY OF THE REPORT

The report was prepared by NS for consideration, on behalf of the Warsaw Stock Exchange S.A.

The Analyst is not a party to any contract concluded with the Issuer and does not receive remuneration from the Issuer. The Analyst's remuneration for preparing the Report due from NS is not directly related to transactions in brokerage services provided by NS or other types of transactions carried out by NS or any other legal entity that is part of the group to which NS belongs or with transaction fees that they receive NS or these people. It can not be ruled out that the remuneration that may be due in future to a NS Analyst by another title may be indirectly dependent on NS financial results, including those obtained as part of investment banking transactions related to the Issuer's financial instruments. The Analyst is not a party to any contract concluded with the Issuer and does not receive remuneration from the Issuer. The Analyst's remuneration for preparing the Report due from NS is not directly related to transactions in brokerage services provided by NS or other types of transactions carried out by NS or any other legal entity that is part of the group to which NS belongs or with transaction fees that they receive NS or these people. It can not be ruled out that the remuneration that may be due in future to a NS Analyst by another title may be indirectly dependent on NS financial results, including those obtained as part of investment banking transactions related to the Issuer's financial instruments.

It is possible that NS has or will have the intention to submit an offer to provide services to the Issuer.

ORGANIZATIONAL AND ADMINISTRATIVE SOLUTIONS AND INFORMATION BARRIERS ESTABLISHED TO PREVENT CONFLICT OF INTERESTS AND TO AVOID THEMSELVES

Detailed rules of conduct in the event of conflicts of interest are set out in the "Regulations of Conflicts of Interest Management at Noble Securities SA" available at the website www.noblesecurities.pl in the tab: "About us" / "Regulations" / "Information policy".

The internal structure of NS ensures organizational separation of analysts from individuals (teams) performing activities that involve the risk of a conflict of interest and prevents conflicts of interest, and in the event of such conflict enables protection of the Client's interests against the harmful effects of this conflict. In particular, Analysts do not have access to information about transactions concluded on the NS's own account and to Client orders. NS ensures that there is no possibility for third parties to exert any adverse influence on the performance of the work by Analysts. NS ensures that there are no links between the amount of remuneration of employees of one organizational unit and the amount of remuneration of employees of another organizational unit, or the amount of income earned by that other organizational unit, if these units perform activities that involve the risk of a conflict of interests

NS has implemented internal regulations regarding the flow of confidential and professional information, which is aimed at securing confidential information or professional secrecy and preventing its unjustified flow or misuse. NS limits to a minimum the circle of people who have access to confidential information or professional secrecy. In order to control access to relevant non-public information, within NS there are internal limitations and barriers in the transfer of information, so-called *Chinese walls*, i.e. rules, procedures and physical solutions to prevent the flow and use of confidential information and constitute professional secrecy. NS uses restrictions in physical access (separate rooms, lockable filing cabinets) and in access to information systems.

NS has implemented regulations in the scope of performing activities consisting in preparing investment analyzes, financial analyzes and other general recommendations regarding transactions in financial instruments, as well as the internal procedure regulating the subject scope. NS discloses in the content of Reports prepared by itself all connections and circumstances that could affect the objectivity of the Reports being prepared. It is forbidden to accept material or non-material benefits by NS or the Analyst from entities having a significant interest in the content of the Report, suggesting to the Issuer by NS or Analyst content favorable to that Issuer. It is forbidden to make available to the Issuer or other persons than Analysts, the Report, containing the content of the recommendation or the target price, before commencing its distribution for purposes other than verification of the NS's compliance with its legal obligations.

NS has implemented internal regulations regarding the rules of concluding personal transactions by involved persons, including prohibits the use of information obtained in connection with business activities for personal transactions. In addition, Analysts may not enter into personal transactions regarding the Issuer's financial instruments or related financial instruments prior to the dissemination of the Report, as well as personal transactions that conflict with the content of the Report and when NS starts or works on issuing Issuer's financial instruments since the Insurer's information in in this respect until the prospectus is published - in the case of a public offer or for launching an offer.

OTHER INFORMATION AND RESERVATIONS

NS ensures that the Report has been prepared with due diligence and integrity based on generally available facts and information recognized by the Analyst as reliable, reliable and objective, however NS nor the Analyst does not guarantee that they are fully accurate and complete. If the Report indicates the addresses of the websites used in the preparation of the Report, neither the Analyst nor NS takes responsibility for the content of these websites.

Investing can involve high investment risk. The analytical report cannot be treated as an assurance or guarantee of avoiding losses, or achieving potential or expected results, in particular profits or other benefits from transactions carried out on its basis, or in connection with refraining from such transactions. A general description of financial instruments and the risk related to investing in individual financial instruments is presented at www.noblesecurities.pl in the tab Brokerage House / Brokerage Account/ Documents. NS points out that although the above information has been prepared with due diligence, in particular in a reliable manner and in accordance with NS's best knowledge, it may not be exhaustive and may exist or be updated in the specific situation in which an investor is or will be located other risk factors than those indicated in the above information by NS. The investor should bear in mind that investments in individual financial instruments may result in the loss of some or all of the funds invested, and even involve the additional costs.

Investors using the Report may not resign from independent assessment and take into account other circumstances than indicated by the Analyst or by NS.

The Report has been prepared in accordance with legal requirements ensuring independence, in particular from the Commission Delegated Regulation (EU) 2016/958 of 9 March 2016 supplementing Regulation (EU) No 596/2014 of the European Parliament and of the Council with regard to regulatory technical standards concerning technical means for the purpose of presenting investment recommendations or other information recommending or suggesting an investment strategy and disclosing particular interests or indications of conflicts of interest. The report is an investment study referred to in art. 36 par. 1 Commission Delegated Regulation (EU) 2017/565 of 25 April 2016 supplementing Directive 2014/65 / EU of the European Parliament and of the Council with regard to organizational requirements and operating conditions for investment firms and concepts defined for the purposes of this directive.

The Report or any of its entries do not state:

- offer within the meaning of art. 66 of the Act of 23 April 1964 - the Civil Code,
- grounds for concluding a contract or creating a liability,

- public offering of financial instruments within the meaning of art. 3 of the Act of July 29, 2005 on Public Offering, Conditions Governing the Introduction of Financial Instruments to Organized Trading, and Public Companies,
- invitations to subscribe for or purchase securities of the Issuer,
- investment advisory services or portfolio management services referred to in the Act of 29 July 2005 on Trading in Financial Instruments,
- investment, legal, accounting or other types of advice.

The Report

- is published on the NS website: <https://noblesecurities.pl/dom-maklerski/analizy2/program-wsparcia-pokrycia-analitycznego-gpw>,
- is intended for distribution only on the territory of the Republic of Poland, and is not intended for distribution or transmission, directly or indirectly, in the United States of America, Canada, Japan or Australia, or any other jurisdiction, where such distribution would violate relevant provisions of the given jurisdiction or required registration in that jurisdiction,
- does not contain all information about the Issuer and does not allow full assessment of the Issuer, in particular as regards the Issuer's financial situation, because only certain data regarding the Issuer were selected for the Report,
- is for information purposes only, so it is not possible to comprehensively evaluate the Issuer based on the Report.

CONCLUDING REMARKS

Analysts preparing the Report: Mateusz Chrzanowski

The completion of the preparation of the Material took place on 16.02.2025 at 15:10.

Date and time of the first dissemination of the Material: 16.02.2025 at 15:30.

The copyright to the Report is vested in the Warsaw Stock Exchange. Dissemination or reproduction of the Report (in whole or in any part) without the written consent of the Warsaw Stock Exchange is prohibited.

The Supreme Court is subject to supervision by the Polish Financial Supervision Authority.

Noble Securities recommendations that have been disseminated in the last 12 months:

| Spółka | Zalecenie | Cena docelowa (4) | Cena przy wydaniu | Cena bieżąca | Różnica do Ceny Docelowej | Data wydania (1) | Data ważności (2) | Sporządził (3) |
|----------------------|-----------|-------------------|-------------------|--------------|---------------------------|------------------|-------------------|----------------------|
| XIB | Kupuj | 95,70 | 75,00 | 90,20 | 6% | 16.01.2026 | 9M | Mateusz Chrzanowski |
| MO-BRUK | Kupuj | 424,80 | 352,50 | 371,00 | 15% | 14.01.2026 | 9M | Dariusz Dadej |
| Creepy Jar | TRZYMAJ | 802,00 | 798,00 | 604,00 | 33% | 12.01.2026 | 9M | Mateusz Chrzanowski |
| Creepy Jar | Trzymaj | 416,00 | 414,00 | 604,00 | -31% | 05.01.2026 | 9M | Mateusz Chrzanowski |
| Aileron | Akumuluj | 17,30 | 15,40 | 18,22 | -5% | 23.12.2025 | 9M | Dariusz Dadej |
| 11bit studios | Trzymaj | 156,00 | 142,00 | 138,00 | 13% | 22.12.2025 | 9M | Mateusz Chrzanowski |
| Budimex | Redukuj | 590,00 | 648,00 | 761,00 | -22% | 22.12.2025 | 9M | Dariusz Nawrot |
| PGE | Trzymaj | 8,95 | 8,64 | 10,09 | -11% | 11.12.2025 | 9M | Michał Sztabler |
| CD Projekt | Akumuluj | 283,00 | 253,00 | 240,70 | 18% | 11.12.2025 | 9M | Mateusz Chrzanowski |
| Ryu Therapeutics | Kupuj | 45,40 | 28,20 | 25,15 | 81% | 27.11.2025 | 9M | Krzysztof Radojewski |
| Molecure | Kupuj | 9,20 | 6,50 | 7,37 | 25% | 27.11.2025 | 9M | Krzysztof Radojewski |
| Celon Pharma | Kupuj | 34,60 | 21,60 | 23,40 | 48% | 27.11.2025 | 9M | Krzysztof Radojewski |
| Captor Therapeutics | Kupuj | 94,40 | 60,40 | 81,80 | 15% | 27.11.2025 | 9M | Krzysztof Radojewski |
| Selvita | Kupuj | 63,90 | 44,00 | 43,30 | 48% | 26.11.2025 | 9M | Krzysztof Radojewski |
| Aplisens | nd | 20,45 | 17,95 | 17,00 | 20% | 25.11.2025 | 9M | Michał Sztabler |
| Apator | Kupuj | 29,60 | 22,70 | 26,65 | 11% | 21.11.2025 | 9M | Michał Sztabler |
| Amica | Kupuj | 97,90 | 22,00 | 59,80 | 64% | 21.11.2025 | 9M | Mateusz Chrzanowski |
| Pepco Group | Trzymaj | 25,50 | 26,83 | 28,17 | -9% | 19.11.2025 | 9M | Dariusz Dadej |
| Dino Polska | Trzymaj | 41,00 | 41,79 | 39,50 | 4% | 19.11.2025 | 9M | Dariusz Dadej |
| PGE | Redukuj | 9,95 | 11,37 | | | 12.11.2025 | 9M | Michał Sztabler |
| Answear.com | Akumuluj | 33,70 | 29,00 | 23,10 | 46% | 20.10.2025 | 9M | Dariusz Dadej |
| MCI Capital | Kupuj | 43,20 | 29,30 | 27,60 | 57% | 14.10.2025 | 9M | Krzysztof Radojewski |
| LPP | Kupuj | 23000,00 | 17495,00 | 20890,00 | 10% | 06.10.2025 | 9M | Dariusz Dadej |
| Bioton | Akumuluj | 4,86 | 4,40 | 4,10 | 19% | 06.10.2025 | 9M | Krzysztof Radojewski |
| Toya | Kupuj | 14,50 | 9,96 | 9,50 | 53% | 03.10.2025 | 9M | Dariusz Nawrot |
| Sonel | Redukuj | 14,67 | 17,50 | 15,40 | -5% | 03.10.2025 | 9M | Michał Sztabler |
| Torpol | Redukuj | 46,20 | 49,60 | 61,90 | -25% | 30.09.2025 | 9M | Dariusz Nawrot |
| Unibep | Kupuj | 15,00 | 10,00 | 15,80 | -5% | 26.09.2025 | 9M | Dariusz Nawrot |
| Huuuge | Akumuluj | 27,30 | 23,10 | 24,50 | 11% | 24.09.2025 | 9M | Mateusz Chrzanowski |
| Dino Polska | Redukuj | 40,00 | 46,03 | | | 23.09.2025 | 9M | Dariusz Dadej |
| Budimex | Akumuluj | 560,00 | 518,20 | 761,00 | -26% | 18.09.2025 | 9M | Dariusz Nawrot |
| Huuuge | Kupuj | 27,80 | 22,00 | | | 18.09.2025 | 9M | Mateusz Chrzanowski |
| Creepy Jar | Trzymaj | 495,00 | 455,00 | 604,00 | -18% | 16.09.2025 | 9M | Mateusz Chrzanowski |
| Eurocash | Akumuluj | 9,50 | 8,10 | 6,42 | 48% | 15.09.2025 | 9M | Dariusz Dadej |
| Creotech Instruments | Akumuluj | 371,00 | 324,00 | 579,00 | -36% | 15.09.2025 | 9M | Krzysztof Radojewski |
| Tauron PE | Sprzedaj | 7,17 | 9,35 | 11,04 | -35% | 08.09.2025 | 9M | Michał Sztabler |
| MO-BRUK | Akumuluj | 338,00 | 295,00 | 371,00 | -9% | 08.09.2025 | 9M | Dariusz Dadej |
| Bogdanka | Redukuj | 19,22 | 23,20 | 20,90 | -8% | 19.08.2025 | 9M | Michał Sztabler |
| Forte | Kupuj | 33,90 | 27,30 | 23,90 | 42% | 18.08.2025 | 9M | Dariusz Dadej |
| Apator | Akumuluj | 23,20 | 20,40 | | | 22.07.2025 | 9M | Michał Sztabler |
| Selvita | Kupuj | 51,10 | 31,90 | | | 18.07.2025 | 9M | Krzysztof Radojewski |
| Auto Partner | Kupuj | 31,30 | 20,40 | 17,52 | 79% | 03.07.2025 | 9M | Mateusz Chrzanowski |
| InterCars | Kupuj | 774,10 | 568,00 | 619,00 | 25% | 30.06.2025 | 9M | Mateusz Chrzanowski |
| Aileron | Kupuj | 24,10 | 19,70 | 18,22 | 32% | 25.06.2025 | 9M | Dariusz Dadej |
| Captor Therapeutics | Kupuj | 86,00 | 32,50 | | | 24.06.2025 | 9M | Krzysztof Radojewski |
| Celon Pharma | Kupuj | 33,70 | 21,80 | | | 24.06.2025 | 9M | Krzysztof Radojewski |
| Molecure | Kupuj | 11,90 | 5,70 | | | 24.06.2025 | 9M | Krzysztof Radojewski |
| Ryu Therapeutics | Kupuj | 59,70 | 30,10 | | | 24.06.2025 | 9M | Krzysztof Radojewski |
| Pepco Group | Akumuluj | 21,90 | 19,36 | | | 13.06.2025 | 9M | Dariusz Dadej |
| MO-BRUK | Akumuluj | 321,00 | 270,00 | | | 30.05.2025 | 9M | Dariusz Dadej |
| Photon Energy | nd | 3,70 | 3,50 | 1,84 | 101% | 21.05.2025 | 9M | Michał Sztabler |
| Noctiluca | nd | 184,00 | 98,00 | 91,40 | 101% | 15.05.2025 | 9M | Krzysztof Radojewski |
| Mabion | nd | 15,00 | 10,30 | 8,20 | 83% | 15.05.2025 | 9M | Krzysztof Radojewski |
| Sonel | nd | 15,14 | 16,50 | | | 08.05.2025 | 9M | Michał Sztabler |
| Unibep | nd | 14,30 | 10,60 | | | 06.05.2025 | 9M | Dariusz Nawrot |
| Budimex | Sprzedaj | 515,00 | 640,00 | | | 29.04.2025 | 9M | Dariusz Nawrot |
| Answear.com | Akumuluj | 31,30 | 27,85 | | | 22.04.2025 | 9M | Dariusz Dadej |
| TOYA | nd | 12,40 | 6,37 | | | 17.04.2025 | 9M | Dariusz Nawrot |
| MCI Capital | nd | 42,20 | 23,90 | | | 11.04.2025 | 9M | Krzysztof Radojewski |
| Budimex | Trzymaj | 510,00 | 529,00 | | | 07.04.2025 | 9M | Dariusz Nawrot |
| Aplisens | nd | 24,30 | 19,60 | | | 02.04.2025 | 9M | Michał Sztabler |
| Ryu Therapeutics | Kupuj | 59,80 | 19,30 | | | 24.03.2025 | 9M | Krzysztof Radojewski |
| Dino Polska | Sprzedaj | 35,84 | 48,82 | | | 19.03.2025 | 9M | Dariusz Dadej |
| Eurocash | Akumuluj | 9,90 | 9,32 | | | 19.03.2025 | 9M | Dariusz Dadej |
| Budimex | Sprzedaj | 510,00 | 632,00 | | | 13.03.2025 | 9M | Dariusz Nawrot |
| Bioton | nd | 4,52 | 3,50 | | | 05.03.2025 | 9M | Krzysztof Radojewski |
| LPP | Kupuj | 23300,00 | 18140,00 | | | 03.03.2025 | 9M | Dariusz Dadej |
| Huuuge | Kupuj | 25,40 | 17,32 | | | 03.03.2025 | 9M | Mateusz Chrzanowski |
| Celon Pharma | Kupuj | 37,50 | 23,20 | | | 21.02.2025 | 9M | Krzysztof Radojewski |

(1) Data wydania jest równocześnie datą pierwszego rozpowszechnienia, (2) rekomendacja obowiązuje przez 9 miesięcy lub do momentu aktualizacji

(3) Opis stanowisk: Krzysztof Radojewski - Zastępca Dyrektora Departamentu Analiz i Doradztwa, Michał Sztabler - Analityk Akcji, Dariusz Dadej - Analityk Akcji, Mateusz Chrzanowski - Analityk Akcji, Dariusz Nawrot - Starszy Analityk Akcji;

ANALYSIS AND CONSULTING DEPARTMENT

Sobieslaw Kozlowski, MPW
sobieslaw.kozlowski@noblesecurities.pl
tel.: +48 22 213 22 39
Model portfolios, strategy and banks

Krzysztof Radojewski
krzysztof.radojewski@noblesecurities.pl
tel.: +48 22 213 22 35
Biotechnology

Michal Sztabler
michal.sztabler@noblesecurities.pl
tel.: +48 22 213 22 36
Industrial companies, energy, mining

Dariusz Dadej
dariusz.dadej@noblesecurities.pl
tel.: +48 602 445 334
Retail, Industry

Krzysztof Ojczyk, MPW
krzysztof.ojczyk@noblesecurities.pl
tel.: +48 12 422 31 00
Technical analysis

Mateusz Chrzanowski, DI
mateusz.chrzanowski@noblesecurities.pl
tel.: +48 785 904 686
Industry, *automotive, gamedev*, XTB

Dariusz Nawrot
dariusz.nawrot@noblesecurities.pl
tel. +48 783 931 515
Industry, construction, developers, chemistry

INSTITUTIONAL CLIENT SERVICE DEPARTMENT

Jacek Paszkowski, CFA
jacek.paszkowski@noblesecurities.pl
tel: +48 22 244 13 02
mobile: +48 783 934 027

Piotr Dudziński
piotr.dudzinski@noblesecurities.pl
tel: +48 22 244 13 04